

Trails designed by Urban Learners
and illustrated by Danielle Rhoda



Follow the trails of two friendly City of London dragons!



Each trail takes about an hour and includes activities around amazing sculptures. Look out for the information plinth by each sculpture, and visit sculptureinthecity.org.uk to learn more.

FOLLOW THE RED TRAIL... Start at 40 Leadenhall
...this trail takes about 1 hour... finishing on St Mary Axe.

FIND ALL THE SCULPTURES
LOOSE IN THE CITY!



10 Stop when you first see me... then move closer to investigate my texture...
Take it in turns to describe Looping Loop! How many imaginative words can you come up with?

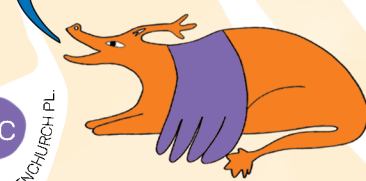
DID YOU KNOW?
Kissing gates are usually found in the countryside where a path crosses a fence. They let people walk through but keep farm animals safely in their field.

Walk through one at a time, as you close my gate...
Turn to face the person behind you!



8 How will you greet the person behind you? A hug? A high five? A secret handshake?

CAN YOU FIND 'IN LOVING MEMORY' A SERIES OF ENGRAVED BRASS BENCH PLAQUES BY OLIVER BRAGG (4A-4E)



9 How many ways can you rest on CAUCUS? Use your whole body!



7 Pretend you are the sculpture! Act out how it would walk and talk!

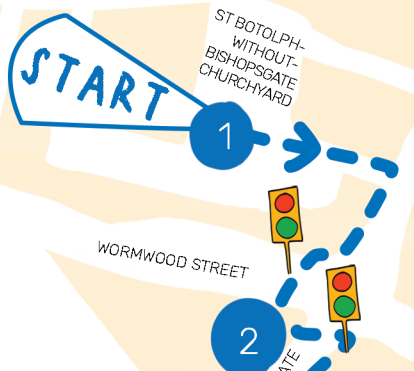
7 I am formed of marble pieces... left to weather for many years.

11 Be a poet! What can you see, hear and sense around you?
Fill in the gaps to reimagine this neon poem!



ANSWER TEMPLE [2]: Approximately 450,000 hard boiled sweets could fit inside 'Temple'.

FOLLOW THE BLUE TRAIL...Start at St Botolph-without-Bishopsgate Churchyard
...this trail takes about 1 hour ... finishing on Fenchurch Street.

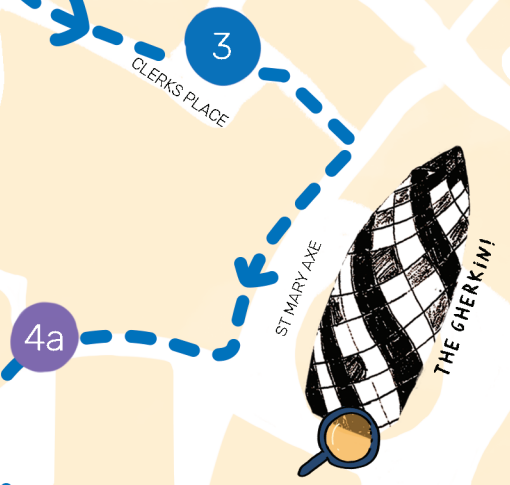


Walk all the way around me... do you think i am empty or full?

Guess! How many sweets would fit inside?

Answer hidden on the other side, in the bottom left corner!

i am formed from rainforest tree roots... Walk all the way around me, i look like different creatures!



We are Charles, Jiwon, Nathaneel, Elena... How tall are you in relation to our faces?

Imagine one of your friends or family as one of the sculptures. Draw them in the frame!

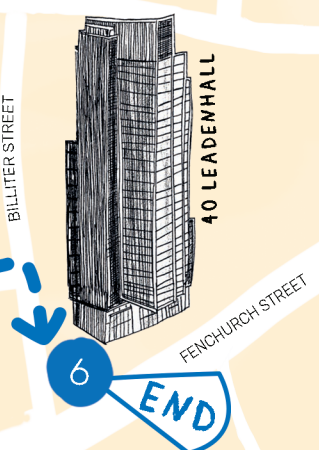
Act out or draw the mythical creatures you see!



i am an ancient face with many stories to tell... How long do you think i've been here?

Describe how you think the sculpture is feeling!

NOW TRY THE RED TRAIL (STARTING WITH THIS SCULPTURE'S BROTHER!)



Look closely... The ink drawings and magnified scans capture glimpses of Roman City structures.

What catches your eye? Describe it in the escalator illustration.

Key:

Handy symbols to look out for on the map

- Look up to discover incredible architecture
- The dragon is a symbol and protector of The City of London
- Bloomberg Connects audio guide stop

Artworks:

The artwork numbers match those on the Sculpture in the City website. The colour of each number shows you whether it is on the blue trail or the red trail. Look out for the information plinth by each sculpture, or visit sculptureinthecity.org.uk to learn more.

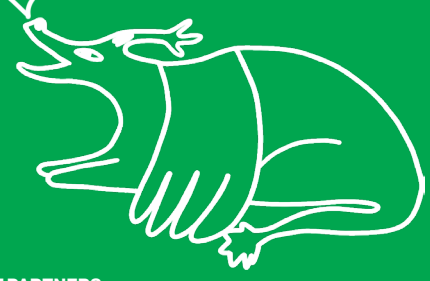
01	Roots: Palace St Botolph-without-Bishopsgate Churchyard, EC2M 3TL	2019	Ai Weiwei
02	Temple Corner of Bishopsgate & Wormwood Street, EC2M 3XD	2023	Richard Mackness
03	Charles. Jiwon. Nathaneel. Elena. 100 Bishopsgate, EC2M 1GT	2024	Julian Opie
04	In Loving Memory In 5 locations: 4a, 4b, 4c, 4d, 4e. Locations shown on both trails.	2020	Oliver Bragg
05	Dendrophiles The Leadenhall Building, EC3V 4AB	2025	Jane and Louise Wilson
06	Untitled 40 Leadenhall, EC3A 3DH (Fenchurch Street)	2014	Daniel Silver
07	Untitled 40 Leadenhall, EC3A 3DH (Leadenhall Street)	2014	Daniel Silver
08	Kissing Gate Aldgate Square, EC3N 1AF (Near St Botolph without Aldgate Church)	2023	Maya Rose Edwards
09	CAUCUS Mitre Square, EC3A 5DH	2023	Samuel Ross
10	Looping Loop 70 St Mary Axe, EC3A 8BE	2025	Andrew Sabin
11	The Garden of Floating Words 70 St Mary Axe, EC3A 8BE	2017	Elisa Artesero

Looking for more art in the City?

Guildhall Art Gallery is home to the City of London's art collection. This year, Guildhall Art Gallery are working with Urban Learners to deliver programmes for schools, families and communities. Join us there on 29th October 2025 for the Sculpture in the City Family Day. Find out more at: thecityofldn.com/families

Bloomberg Connects

Carry on exploring further with SITC's family trail audio guide on Bloomberg Connects - the free arts and culture app. Discover the rich past and futuristic now of this famous area, narrated by Martha Howe-Douglas of Horrible Histories. **Download now!**



SCULPTUREINTHECITY PROJECT PARTNERS

AVIVA

Bloomberg

Brookfield Properties

C C LAND

CITY OF LONDON

HISCOX

nuveen REAL ESTATE

Tower 42 Estate

ACTIVATIONS & PROMOTIONS PARTNER:

EASTERN CITY

PROJECT PATRONS:

Aldgate Connect BID | Foster + Partners | Mtec | Price & Myers

WITH THANKS TO PARTICIPATING ARTISTS AND GALLERIES:

Ai Weiwei | Andrew Sabin | Brooke Benington | Daniel Silver | Elisa Artesero | Friedman Benda | Frith Street Gallery | Jane and Louise Wilson | Julian Opie | Julian Opie Studio | Lisson Gallery | Maureen Paley | Maya Rose Edwards | Oliver Bragg | Richard Mackness | Samuel Ross

Sculpture in the City is delivered by the City of London Corporation alongside LACUNA, a leading cultural studio.